



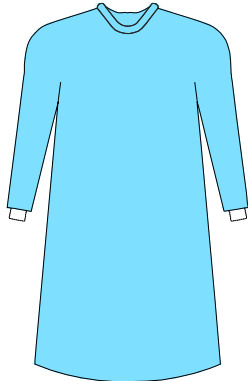
Surgical gown

- **Standard Gowns**
- **Overlap Gowns**
- **Wrap around Gowns**
- **Alcohol Repellent Gown**
- **Speciality Gowns BVB**
- **Other Gowns**

SURGICAL GOWN

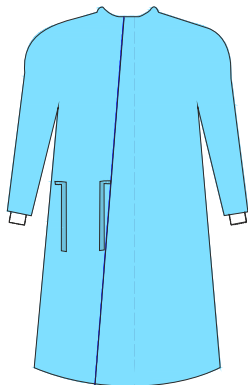
Level - II

SURGICAL GOWN (STANDARD)



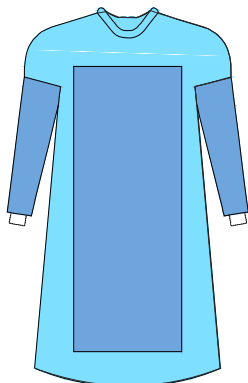
Product Code #	Description	Size(cm)
CR 143027-024 CR 143027-025 CR 143027-026	Surgical Gown (Standard)	Small Medium Large

SURGICAL GOWN (OVERLAP)



Product Code #	Description	Size(cm)
CR 143027-027 CR 143027-028 CR 143027-029	Overlap Gown	Small Medium Large

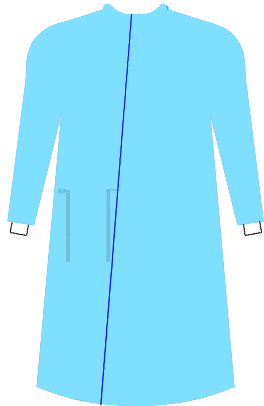
SURGICAL GOWN (OVERLAP REINFORCED)



Product Code #	Description	Size(cm)
CR 143027-030 CR 143027-031 CR 143027-032	Overlap Reinforced Gown	Small Medium Large

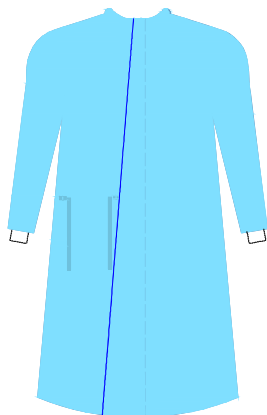


SURGICAL GOWN (ALCOHOL REPELLENT)



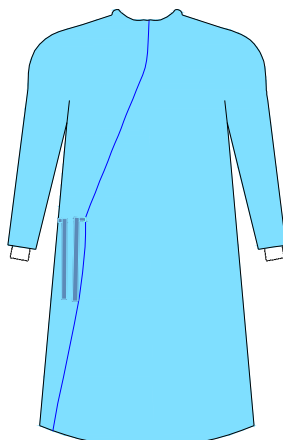
Product Code #	Description	Size(cm)
CR 143027-045 CR 143027-046 CR 143027-047	Surgical Gown (Alcohol Repellent)	Small Medium Large

SURGICAL GOWN (OVERLAP SONTORA)



Product Code #	Description	Size(cm)
CR 143027-046 CR 143027-047 CR 143027-048	Surgical Gown (Overlap Sontora)	Small Medium Large

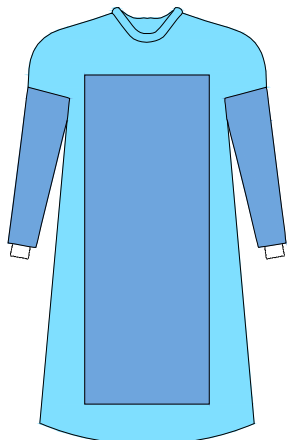
SURGICAL GOWN (WRAP AROUND)



Product Code #	Description	Size(cm)
CR 143027-038 CR 143027-039 CR 143027-040	Surgical Gown (Wrap Around)	Small Medium Large

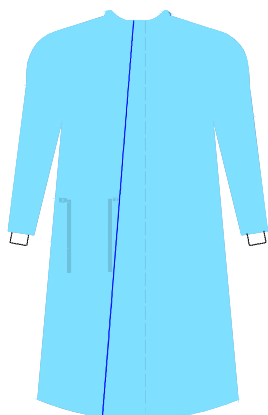


SURGICAL GOWN (WRAP AROUND REINFORCED)



Product Code #	Description	Size(cm)
CR 143027-044 CR 143027-045 CR 143027-046	Surgical Gown (Wrap Around Reinforced)	Small Medium Large

SURGICAL GOWN (OVERLAP BVB)



Level - IV

Product Code #	Description	Size(cm)
CR 143027-047 CR 143027-048 CR 143027-049	Surgical Gown (Overlap BVB)	Small Medium Large

